

This is the Vinyl Floor version of our Kent Floor Tray KFT600/600/KV215/110V (appended with a V to denote the vinyl clamp edge). The vinyl is securely clamped with a z-shaped profile. They are for use primarily in Commercial Kitchens like those seen in hotels, hospitals, stadia, large corporate offices. These places have a high volume of food preparation, have light to medium traffic at ground level and need wide pans to accept tipping, pouring, and splashes.

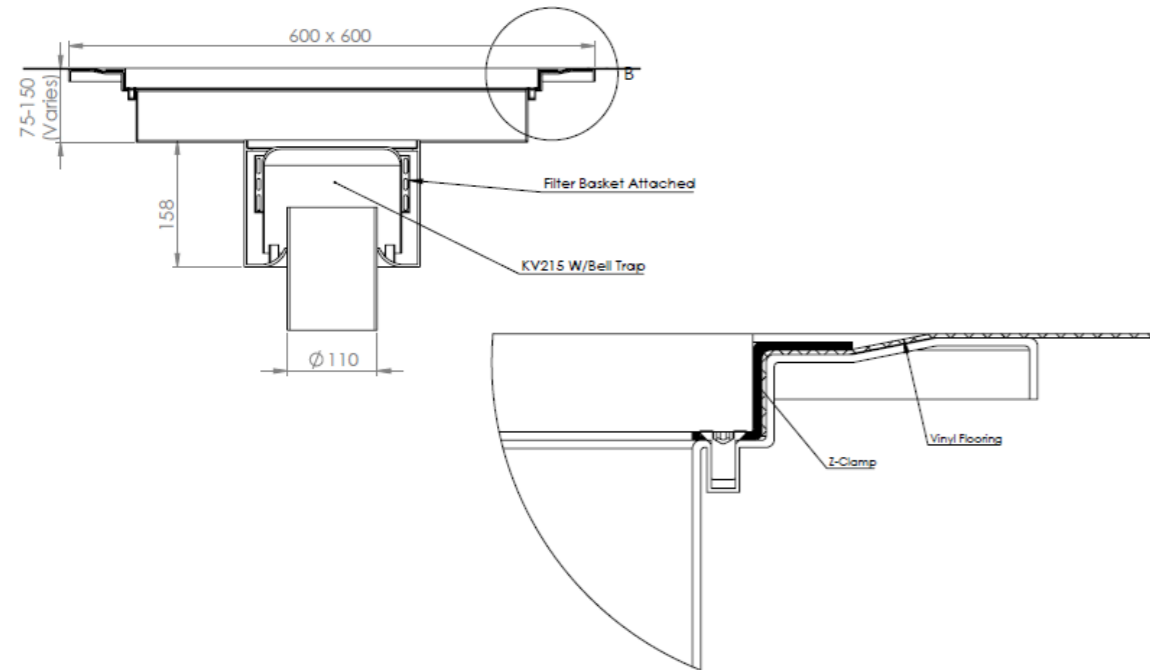
They are generally supplied with open mesh grating. This can be manufactured with Single Anti Slip profile bars as an option.

In most cases a KV215 gully with filter basket is welded to the underside. To increase flow rate move this to a KV315/160 gully, or for upper floors move to a simple trapped 110mm pipe outlet to help with less coring of the floor..

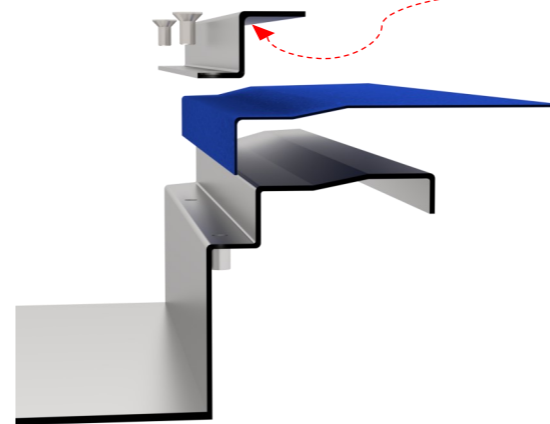
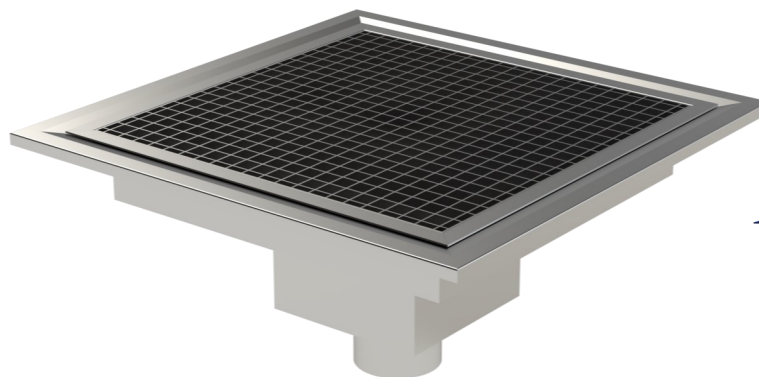
110mm or 160mm outlet is required, but this can easily be substituted for a 4" or 6" SCH10 outlet pipe. It is trapped as standard with the Kent Bell Trap.

Features:

- Z-Profile Vinyl Floor Clamp
- Grade 304 (1.4301) or 316 (1.4401) Stainless Steel to BS EN 10088
- Low Cost
- Short lead time
- Usable in both light and medium duty areas
- Suitable for commercial kitchen projects
- Pre-sloped with 1:150 fall

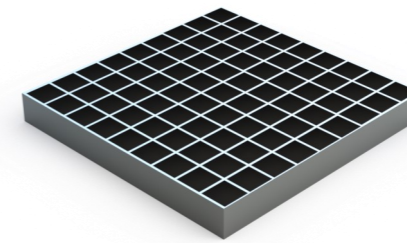


Product Code	Height	Length	Width	Outlet	Flow Rate*	
SQUARE						
KFT450/450/KV215/110V	75 - 150	600	600	110	3.94l/s	
KFT600/600/KV215/110V	75 - 150	600	600	110	3.94l/s	
KFT600/600/KV315/160V	75 - 150	600	600	160	10.20l/s	(high flow floor version)
KFT600/600/KH215/110V	75 - 150	600	600	110	4.42l/s	(side outlet version)
KFT600/600/110V	75 - 150	600	600	110	1.4l/s	(low flow floor version)
RECTANGULAR						
KFT900/600/KV215/110V	75 - 150	900	600	110	3.94l/s	
KFT900/600/KV315/160V	75 - 150	900	600	160	10.20l/s	(high flow floor version)
KFT1000/300/KV215/110V	75 - 150	1000	300	110	3.94l/s	
KFT1000/500/KV215/110V	75 - 150	1000	500	110	3.94l/s	
KFT1200/300/KV215/110V	75 - 150	1200	300	110	3.94l/s	

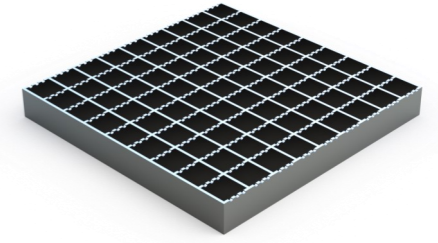


GRATING OPTIONS

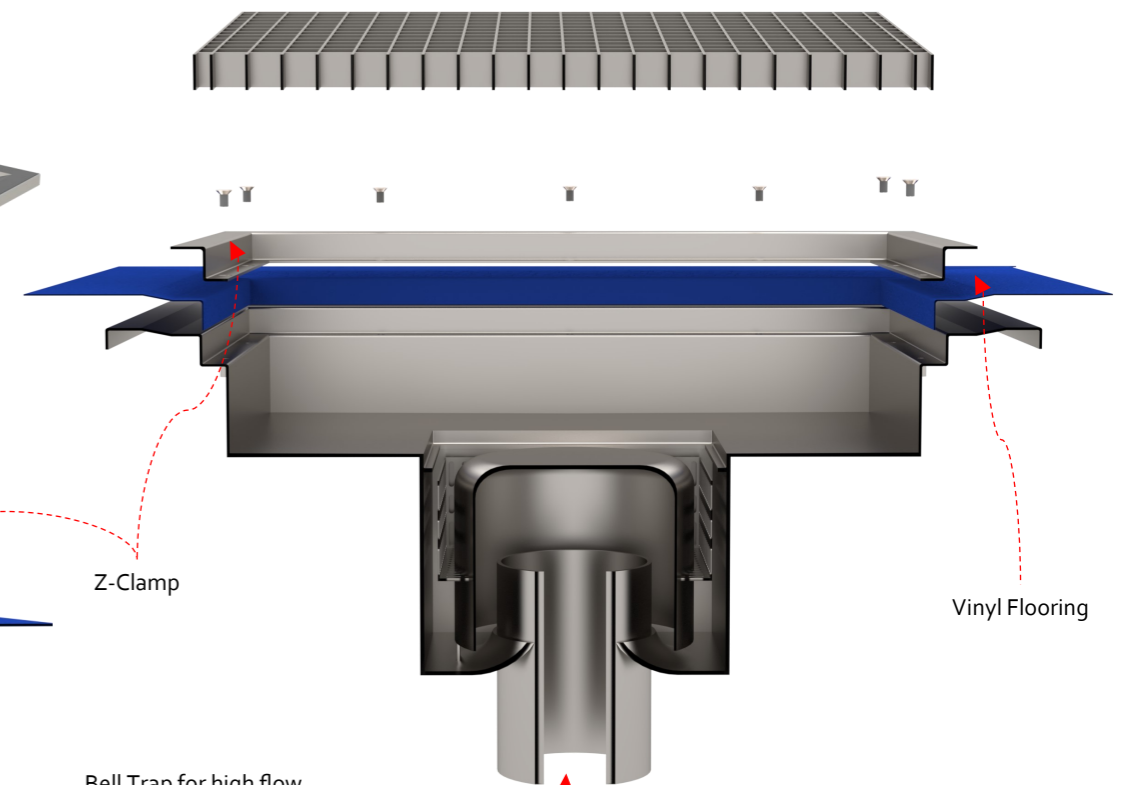
COMMERCIAL KITCHENS



Mesh Grate



Anti Slip Mesh Grate



July 2023

BS EN1253 Loading Class L15 / R50

Our internal gullies can be subjected to very heavy loads but must have the correct heavy duty grating to achieve these loads. Suitable for Restaurants & Commercial Kitchens.

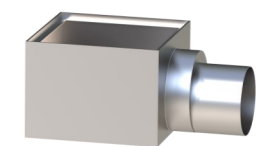
Specify: Kent KFT600/600/KV215/110V trapped floor tray; 600mm x 600mm; grade 304 stainless steel; complete with Mesh grating and filter basket.

Choose the product code from the dimensions table on the left.

(amend underlined words to suit project)



Integrated Filter Basket



Side Outlet version available