



Kent
STAINLESS

07/2023

Passivated



DESCRIPTION

Kent Passivated finish is a non-reflective, smooth finish. It is widely used on streetscape gratings and the underside of many products that do not require an aesthetically pleasing polish.. It is used most often on streetscape drain grates, manhole cover edges and the bodies of drain channel eg slot drains. It's also commonly used on stainless that might have direct food contact. Kent Stainless also uses it widely on large structures like Process Waste Tanks, and De-watering Machinery.

Kent Passivated Finish is a dull, non reflective and smooth finish.

The fact that it is smooth with no grain means it has a lower contamination risk than Satin 320 Grit Polished, and requires less cleaning.

This finish is one of a number of 'Mill Finishes' and Kent Stainless receives them from the Stainless Steel Mill in this format



Kent Internal reference is 'KF1' and appended with 2B Cold Rolled



In Europe and the UK the standard BS EN10088-2 refers to this finish as '2B'.



In the USA & Canada the standard ASTM refers to this finish as a No. 2B Finish.



This Ra value is not specified for this finish in most cases but typically it has a reading of approximately 0.3 microns (aka 0.3 μ m)

Specify: "Kent Passivated Finish"

STAINLESS STEEL FINISHES

Passivated

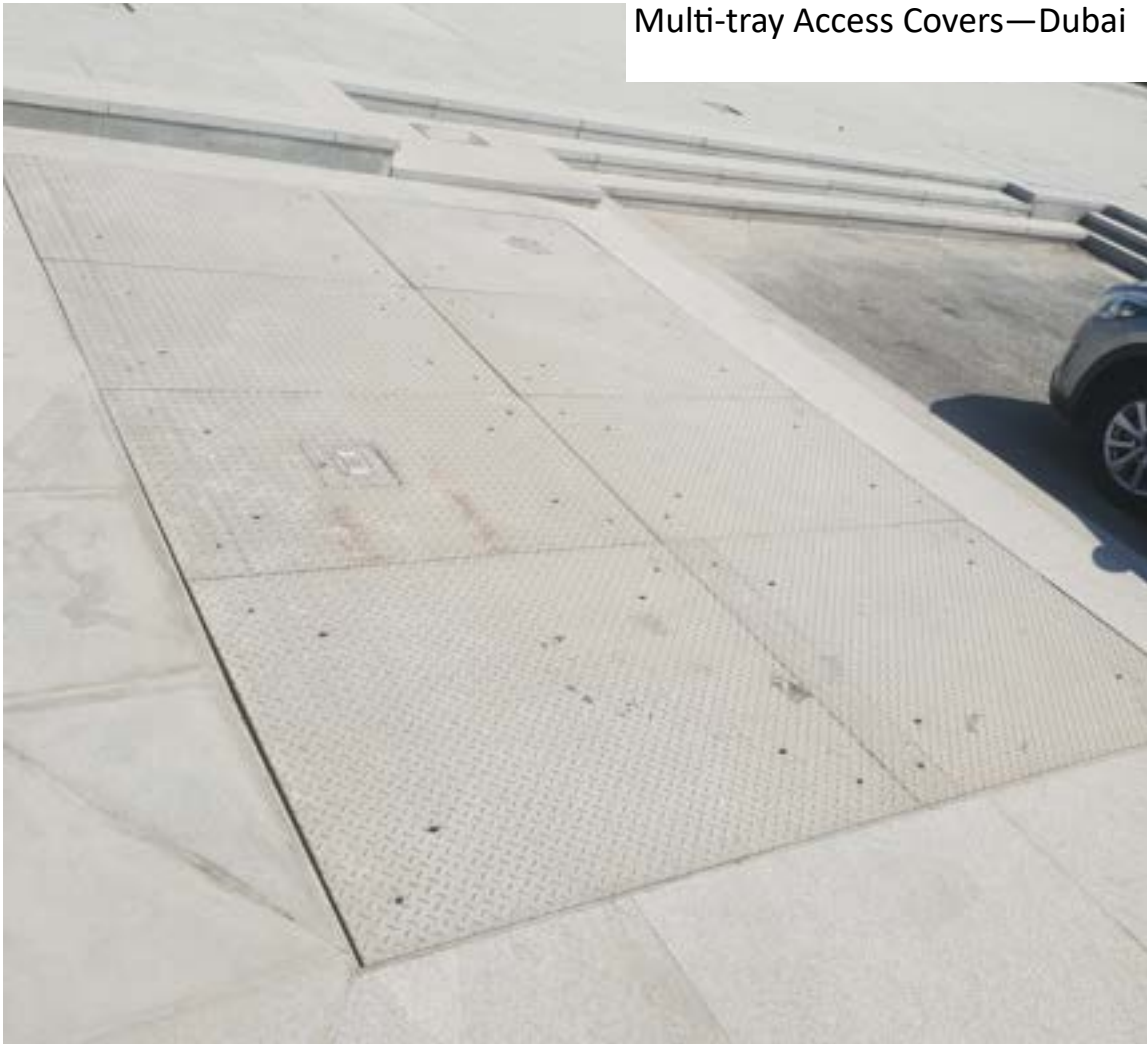


Vertical Ventilation Panels between steps - Battersea, London



Horizontal Hinged Covers for Coffin Bollards—Walthamstow, UK (Lids only)

Multi-tray Access Covers—Dubai



Underside of In Ground Power Unit Panels—
Kings Cross, London

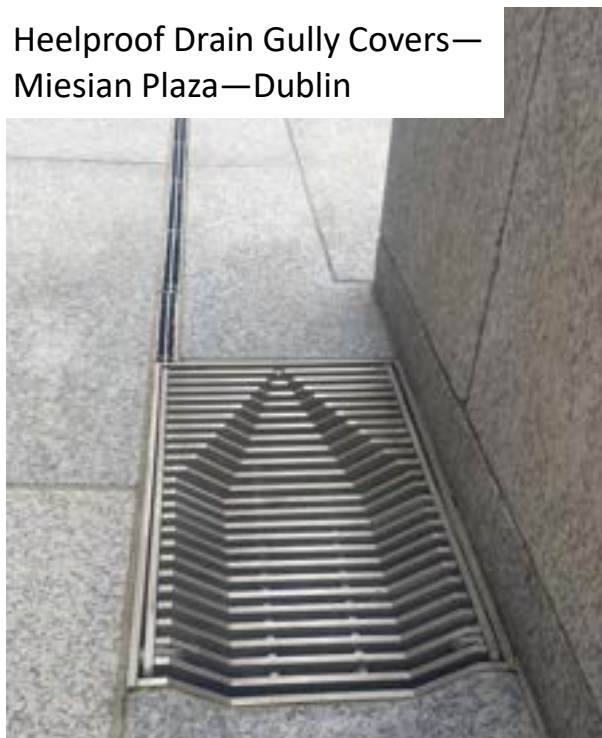




STAINLESS STEEL FINISHES

Passivated

Heelproof Drain Gully Covers—
Miesian Plaza—Dublin



Telescopic IGU—Roscommon



Telescopic IGU—Dubai Creek Harbour



Telescopic IGU—Roscommon

STAINLESS STEEL FINISHES

Passivated



Process Waste Tanks—Limerick



STAINLESS STEEL FINISHES

Passivated

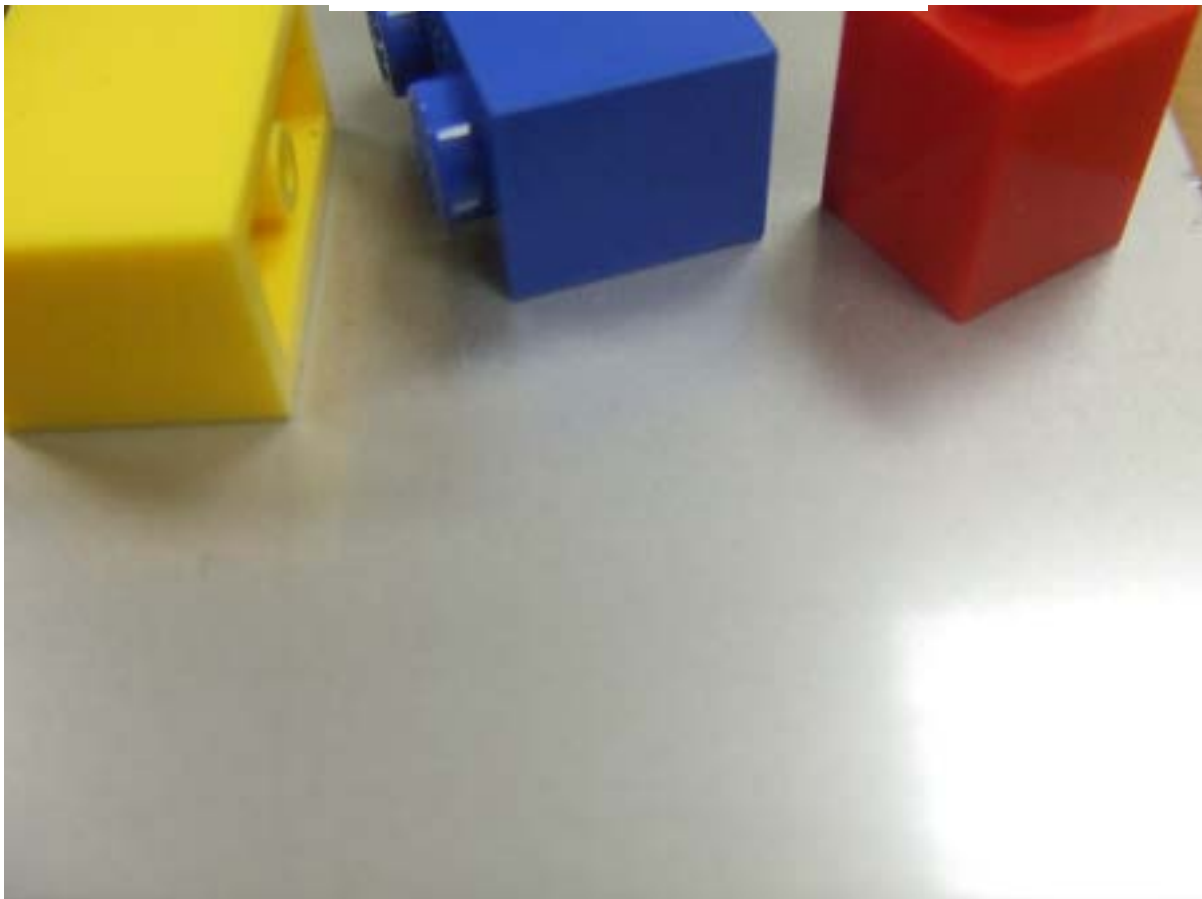


STAINLESS STEEL FINISHES

Passivated



Non-reflective, smooth finish.



Stainless Steel Maintenance.

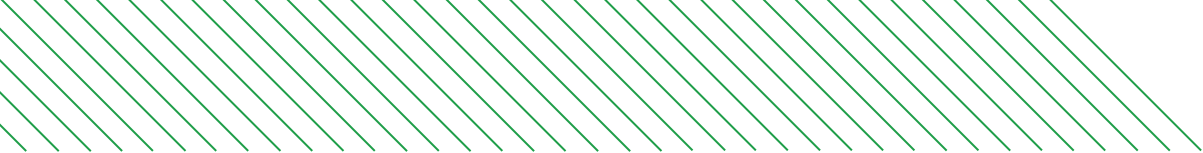
Although corrosion resistant, Stainless Steel needs to be well looked after to have a long service life. Salt, Iron and Grit are the biggest contributors of rusting on stainless steel products.

Clean the stainless-steel components using warm water with a mild detergent with a non-abrasive cloth or sponge. Heavier stains may require the use of a nylon scouring pad or a stainless-steel cleaner.

To remove paint or graffiti (or light concrete splashes) use a cloth and alkaline or solvent paint strippers according to type of paint. For Satin Finish Stainless try to follow the direction of the grain when cleaning vigorously or polishing. For Bead Blasted Finish use a circular motion. Rust spots or 'tea stains' can occur on the surface of the material, these are normally caused by contamination from ordinary mild steel, particularly in areas where construction work has been undertaken.

Where contamination of the stainless has occurred from ordinary mild steel coming into contact with the stainless, use Rust Remover 410. In cases where the surface is severely stained as a result of severe environmental conditions or scratched due to misuse, it may still be possible to restore the original finish using chemicals such as Oxalic Acid solution.

At specification/design stage we always recommend a polish that uses electropolishing – eg. Cold Rolled Electropolished or Bright Satin. These polishes combined with using grade 316L stainless will give your stainless project the best chance of an enduring pristine finish. Cleaning as described above once or twice per annum is sufficient in almost all locations. Proximity to salt water or a dry environment where rainwater cannot reach some stainless parts may need more frequent cleaning.



KENT STAINLESS

Underside of Recessed Manhole Covers—Lusail Metro—Qatar

Contact us

Phone: +353 53 914 3216

UK Freephone: 0800 376 8377

USA: 781 374 7391

Email: info@kentstainless.com

