

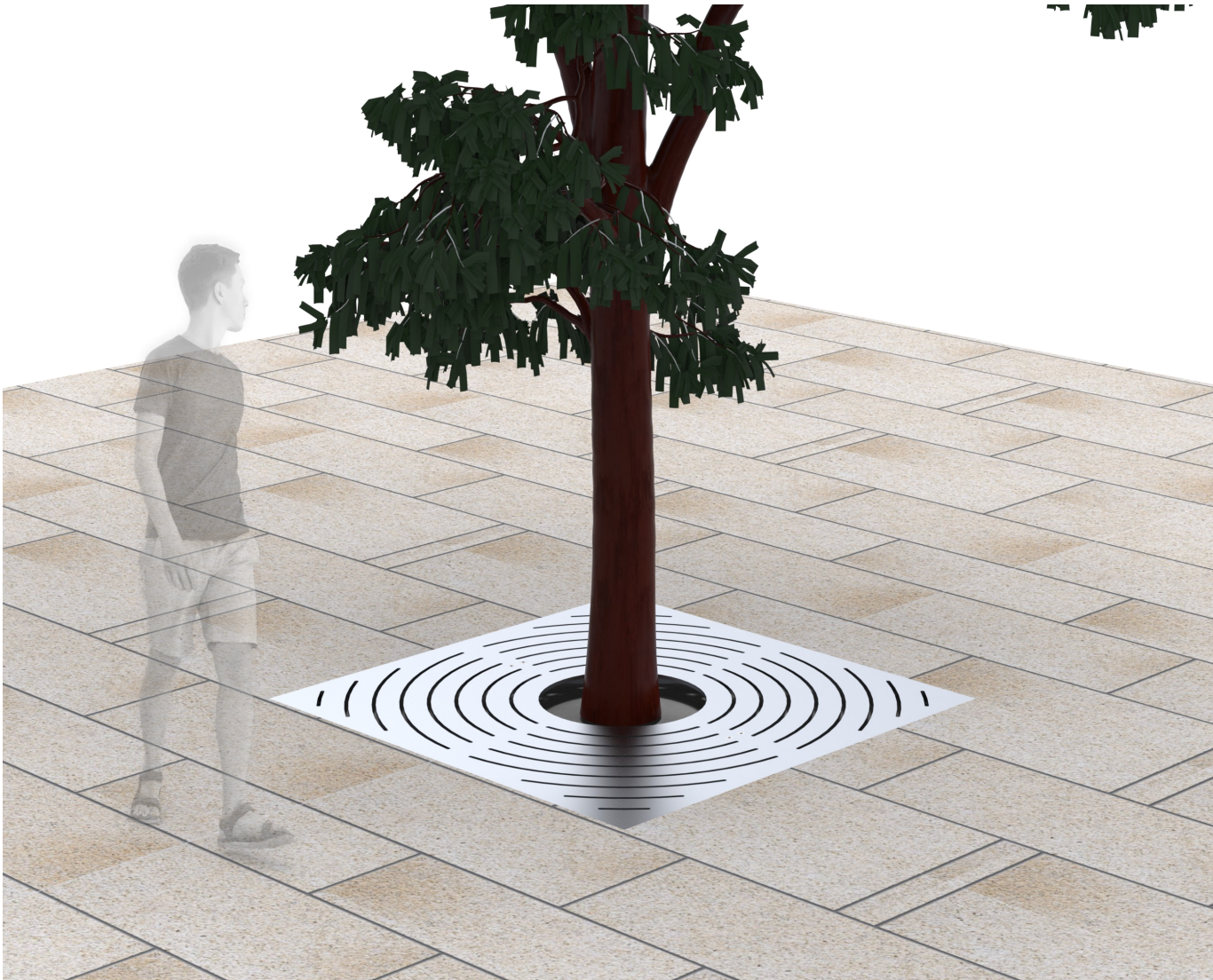


Kent
STAINLESS

12/2023

LASER CUT SQUARE TREE GRILLE

KSTG/1200



LASER CUT SQUARE TREE GRILLE KSTG/1200

The Kent Laser Cut Square Tree Grille is constructed from grade 316 Stainless Steel. The external finish is Bright Peened—a process of bead lasting and then electropolishing afterwards. This gives a ‘mottled’ effect with a uniform no directional finish—a grain type satin finish is not recommended when showing curved shaped slots in a square grille—but this can be satin finished on request.

It can be supplied with a cutout for an irrigation point or an extra one for an aeration point on request. The grille has an overall length of 1200mm, overall width of 1200mm and is 50mm in height including the angle frame.

It can be supplied in Corten steel on request.

4 laser cut pattern shapes are shown—but a custom laser cut pattern can be made at no extra cost.

Features:

- 316 Stainless Steel
- Pre Weathered CorTen on request
- Custom Laser Cut Patterns



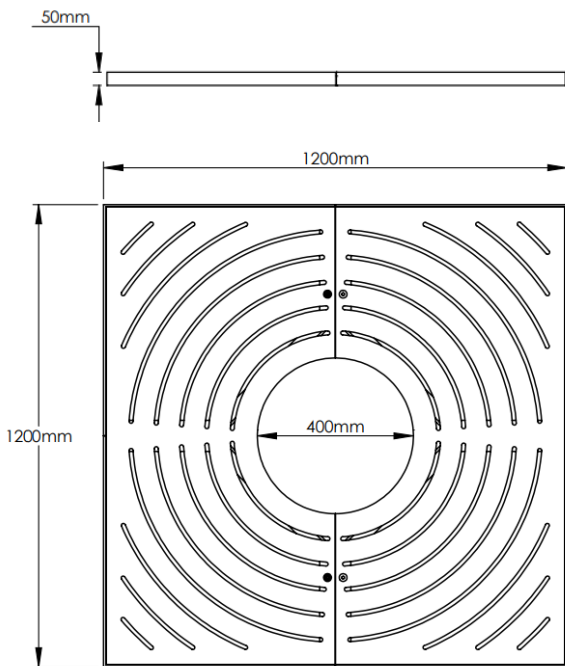
Custom powder coated finish—concentric circles pattern

LASER CUT SQUARE TREE GRILLE KSTG/1200

Product Dimensions

Product Code	Length	Width	Depth
Kent Laser Cut Square Tree Grille KSTG1200	1200mm	1200mm	50mm

Drawings



Stainless Steel—Bright Peened



CorTen Steel Tree Grille



LASER CUT SQUARE TREE GRILLE KSTG/1200

Specification

Specify:

Kent Laser Cut Square Tree Grille (KSTG-1200); Height 50mm ; Length 1200mm x Width 1200mm ; Grade 316L Stainless Steel, Bright Peened Finish; with Concentric Circles Design Cutout

Customise your size
Or go with our standard 1200mm square

Design Options
Standard: Concentric Circles
Dot Cut-Outs
Square Cut-Outs
Sun Rays

Choose your steel & Thickness
Grade 316 Stainless Steel
Pre-Weathered Corten Steel



Timoleague GAA Club, Co. Cork—custom powder coated finish

LASER CUT SQUARE TREE GRILLE KSTG/1200

Finishes

These Planters can be manufactured from :

- Grade 316L Stainless Steel
- Pre-Weathered Corten Steel



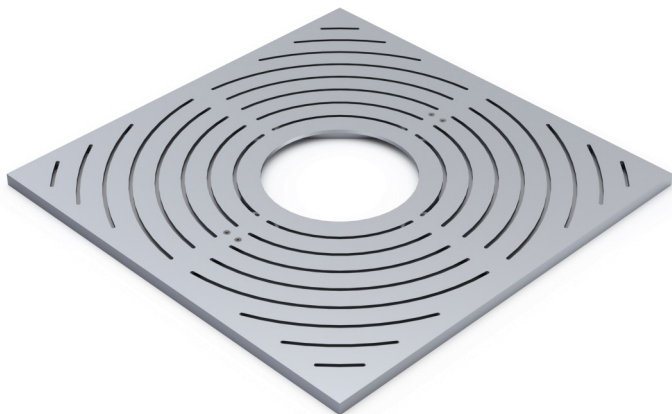
Click on Finish image



Bright Peened



Pre-Weathered CorTen



Bright Peened Stainless

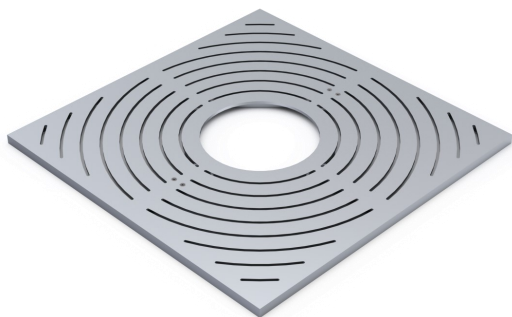


CorTen

Bright Peened

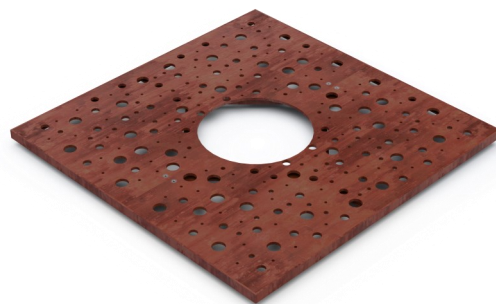
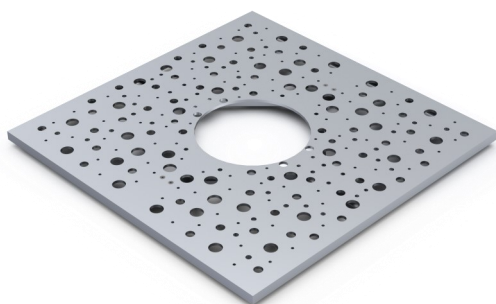
Optional Design Patterns

CorTen



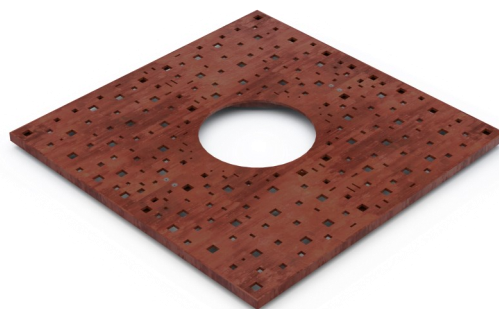
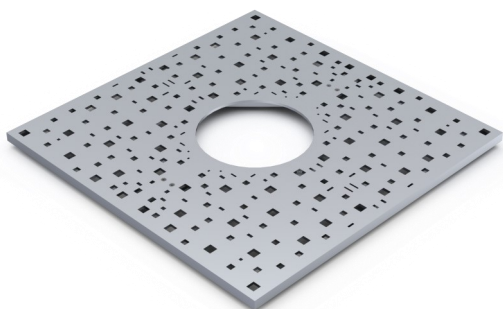
Concentric Circles

Concentric Circles



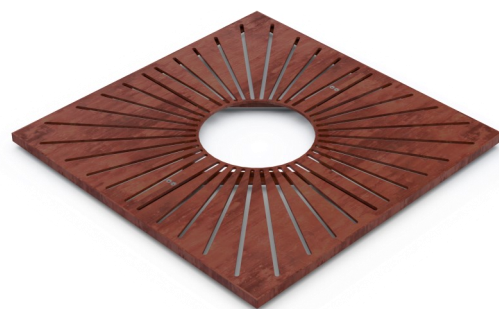
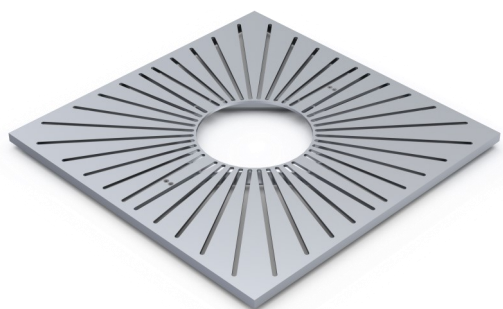
Dot Cut-Outs

Dot Cut-Outs



Square Cut-Outs

Dot Cut-Outs



Sun Rays

Sun Rays



LASER CUT SQUARE TREE GRILLE KSTG/1200

Maintenance

Stainless Steel Maintenance

Clean the stainless steel components using warm water with a mild detergent with a non-abrasive cloth or sponge. Heavier stains may require the use of a nylon-scouring pad or a stainless steel cleaner.

To remove paint or graffiti use a cloth and Alkaline or solvent paint strippers according to type of paint. In the case of a bead blasted finish, where abrasive cleaning is required, always use a random circular rubbing action with a cloth.

In the case of brushed finishes the surface consists of uniform fine 'scratches' running in one direction so where abrasive cleaning is required always use a straight back and forward rubbing action in the direction of the grain using soap and warm water.

Rust spots or 'tea stains' can occur on the surface of the material, these are normally caused by contamination from ordinary mild steel, particularly in areas where construction work has been undertaken. Such stains can be removed using Rust Remover 410.

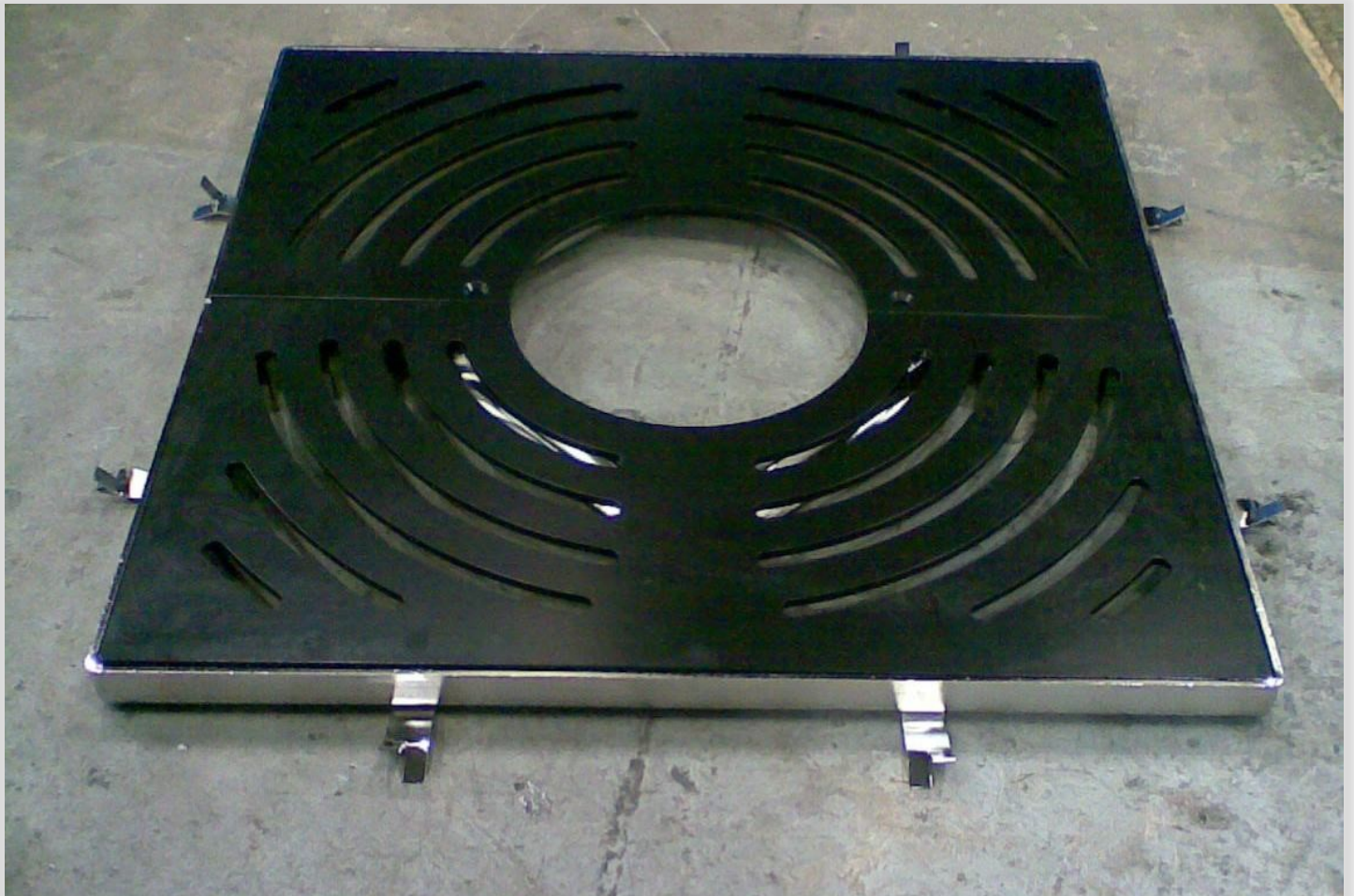
In cases where the surface is severely stained because of severe environmental conditions or scratched due to misuse, it may still be possible to restore the original finish using chemicals such as Oxalic Acid solution. There are many stainless steel polishes available to enhance the surface finish.

Corten Steel Maintenance

Corten steel is similar in strength to Stainless Steel grade 304 and grade 316 – so similar thicknesses of edging can be interchanged on a project. There is a non-uniform patina on the surface that has a rust-like colour but in fact protects the steel below from corrosion. The patina makes it resistant to graffiti and stickers – and any future remedial work can disappear over time as the oxidation forms a new patina over these areas. As a result Corten should need no cleaning regime after installation.

KENT STAINLESS

A partner you can rely on



Timoleague GAA Club, Co. Cork—custom powder coated finish—concentric circles pattern

Contact us

Phone: +353 53 914 3216

UK Freephone: 0800 376 8377

USA: 718 374 7391

Email: info@kentstainless.com

Address: Ardcavan, Wexford, Ireland, Y35 CRW2

