



Kent
STAINLESS

05/2024

Kent P-Shaped Bicycle Stand

KPCS / 1000 / 775



Kent P-Shaped Bicycle Stand

Street Furniture



The Kent P-Shaped Cycle Stand KPSCS1000 is 1000mm high by 775mm wide with a 50mm diameter tube. The P-Shaped cycle stand is a modern design suitable for pedestrianised areas and large urban areas. The elegant design allows 2 bicycles to be locked in position per stand.

Features:

- Grade 316L Stainless Steel
- 50mm diameter tube.
- 2mm Wall thickness
- Allows 2 Bikes per stand

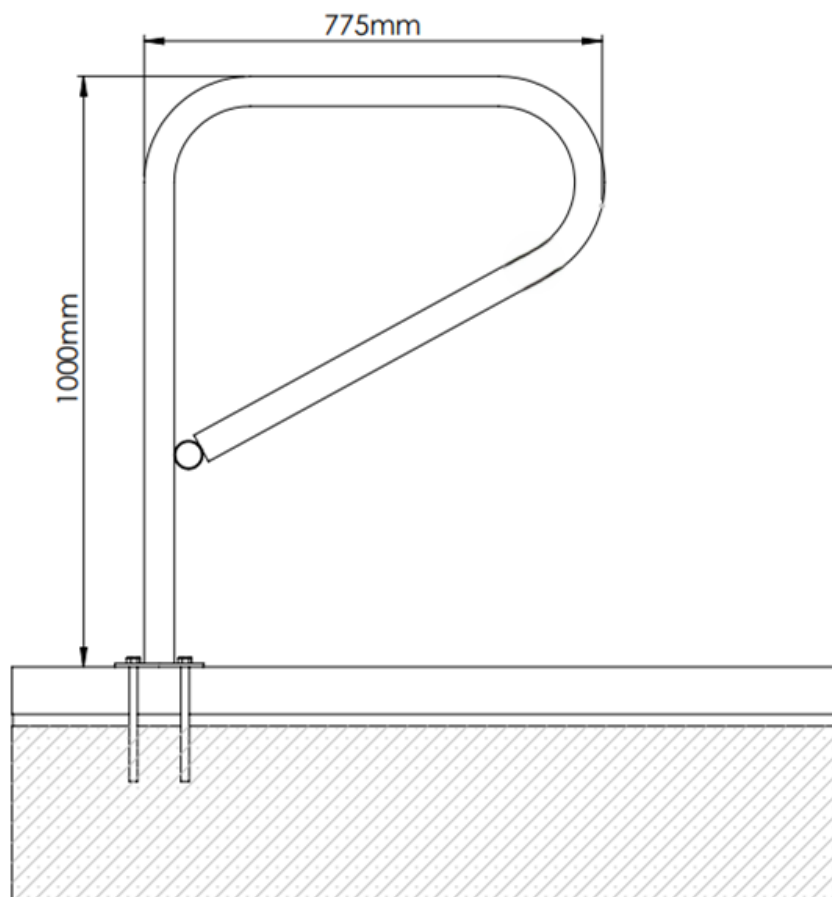


Kent P-Shaped Bicycle Stand

Street Furniture



P-Shaped Stand 1000/775:



Reference	Height	Width	Thickness
Kent Fin Cycle Stand	1000mm	775mm	48mm
	39.37in	30.51in	1.89in

Instructions for fixation to surface:

When fixing your Cycle stand to the Pavement surface firstly a 200mm—150mm hole is drilled into the pavement blocks, Then you insert a chemical mortar and then use a 200mm M14 concrete fixation bolt to bolt the stand to the floor. Some times the process may vary depending on the type of stone being used and the hardness of the material.

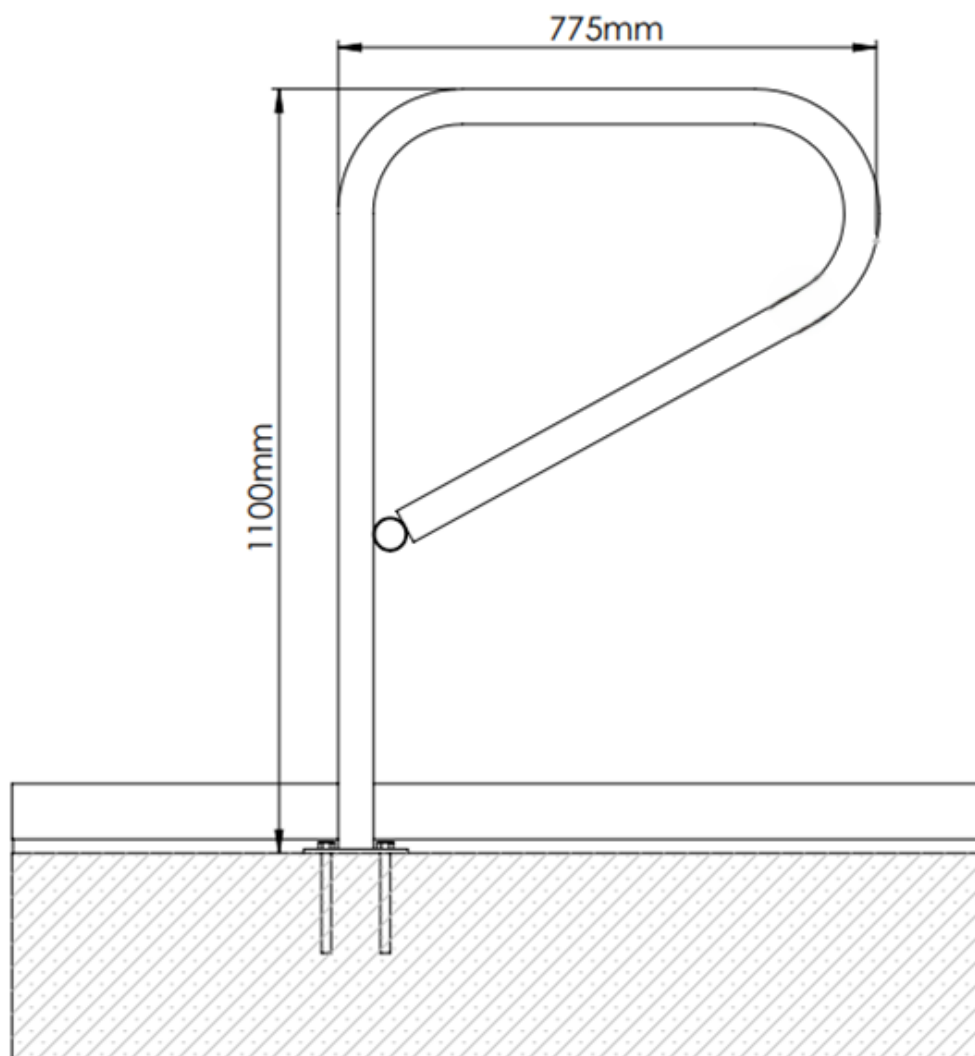


Kent P-Shaped Bicycle Stand

Street Furniture



P-Shaped Stand 1100/775:



Reference	Height	Width	Thickness
Kent Fin Cycle Stand	1100mm	775mm	48mm
	43.31in	30.51in	1.89in

Instructions for fixation to surface:

When fixing your Cycle stand to the Foundation surface firstly a 150mm—100mm hole is drilled into the concrete, Then you insert a chemical mortar and then use a 150mm M14 concrete fixation bolt to bolt the stand to the floor. After this you need to lay screed to level the foundation surface and then lay your pavement over it. Cut the block to allow the stand to protrude from the pavement flush with the blocks.



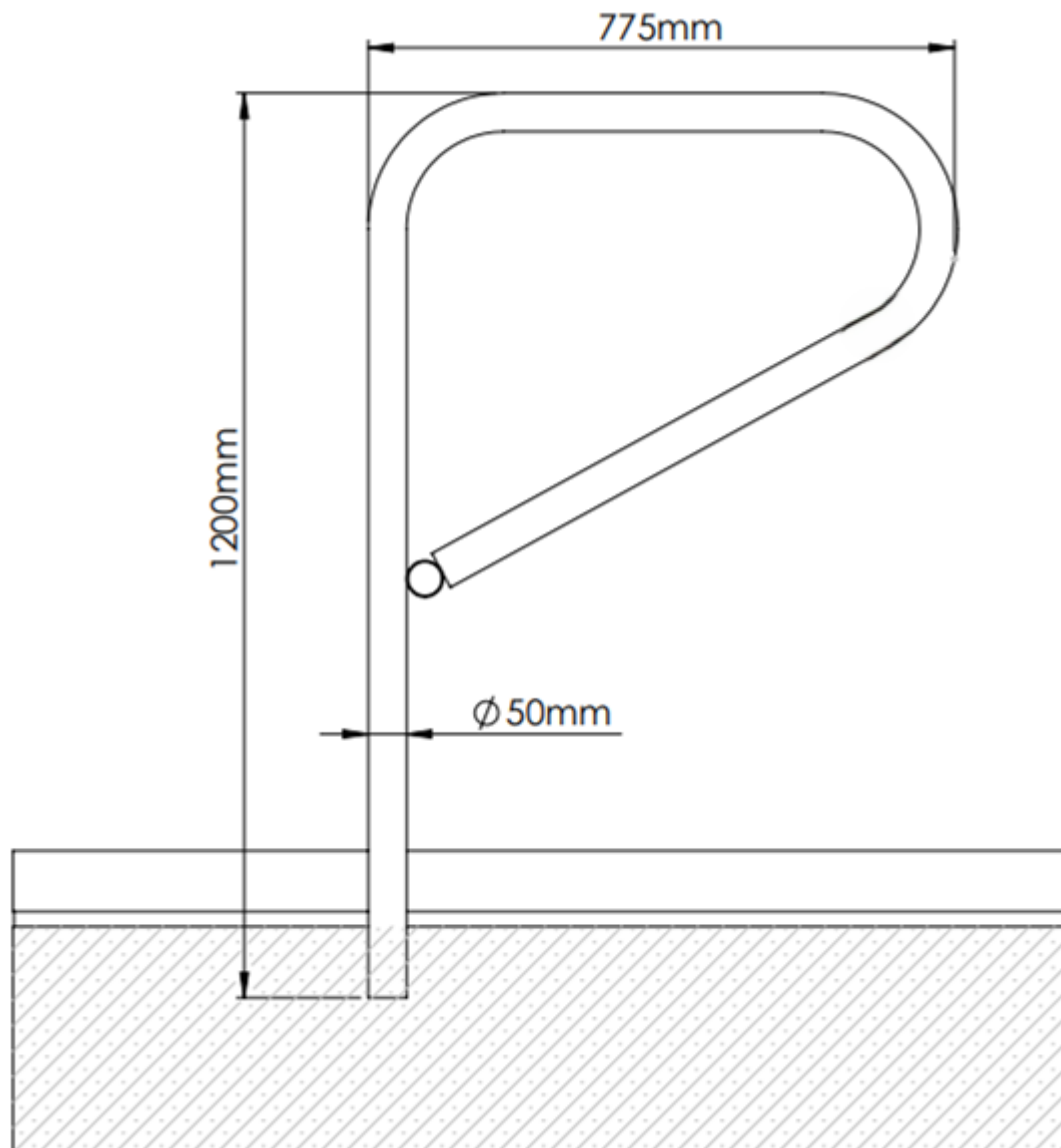
Kent P-Shaped Bicycle Stand

Street Furniture



Kent
STAINLESS

P-Shaped Stand 1200/775:



Reference	Height	Width	Thickness
Kent Fin Cycle Stand	1200mm	775mm	48mm
	47.24in	30.51in	1.89in



Kent P-Shaped Bicycle Stand

Street Furniture



P-Shaped Stand 800/1000:

Optional extra:

The P-Shaped bicycle stand differs to the other Bicycle stands that Kent has on offer as it only has a single point of contact to the pavement surface.

This offers the ability to install and uninstall the cycle stand at will as it is as easy as slotting the bicycle stand into a socket and locking it in. It also works the same when removing the bicycle stand as you can simply unlock your stand and take it out of the socket it is fixed too. This allows flexibility in your bicycle parking orientation as well as offering ease of use in regard to taking out damaged stands and replacing them with new ones.



The socket we would recommend using in tandem with the Kent P-shaped bicycle stand and other products such as our bollard range or Birmingham bicycle stand. Is the ['pittman RS76 Retention Socket'](#)



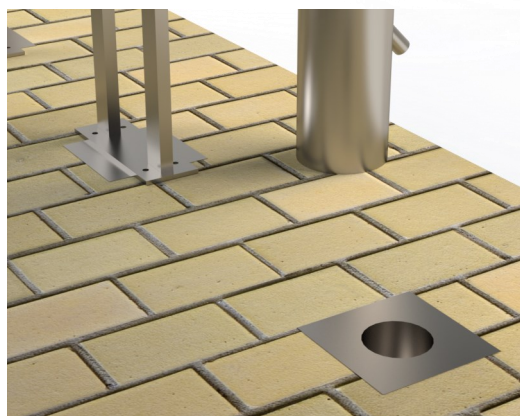
Kent P-Shaped Bicycle Stand

Street Furniture



Installation Processes:

The P-Shaped Bicycle stand also comes in a removable variant which can have certain advantages over the static version such as being able to expand or contract the size of a Bicycle parking area depending on the demand in the given area. It can allow fluidity in infrastructure allowing the parking areas to be adjusted to where there is more of a demand for a bicycle stand on a given day. Examples of this would include things like events in congested urban areas, This fluidity option allows the user to be more efficient with their bicycle stands by only using the amount needed avoiding the set up of bicycle parking areas that may become obsolete or not used to its fullest.



^ When the P-Shaped bicycle stand is dethatched it has a very distinct bottom which is used to insert the Stand into the applicable sockets. The sockets come open and locked depending on what is required.

< The sockets come in stainless also to avoid corrosion. The bike stand is simply slotted into the stand and is good to go requiring very little setup.



Kent P-Shaped Bicycle Stand

Street Furniture



Specify:

To Specify our product in you project take the below specification clause and tailor it to suit your requirements.

Choose your size:

- 1100—cast in below ground
- 1000—Visible Baseplate
- 1200—Buried Baseplate

Or choose your grade:

- 304
- 316

Kent P-shaped Cycle stand KPCR1000; 1000mm long; Grade 316L Stainless Steel; Bright Satin Finish; Cast In.

Or choose your Finish:

- Bright Satin
- Satin 320 Grit Polish
- Shot Peened
- Bright Peened

Choose your Fixing^{3/8}

- Cast In
- Visible Baseplate
- Buried Baseplate



Cleaning and Maintenance

Stainless steel may be a low maintenance material, however it is not maintenance free. Long life aesthetic appearance can be achieved for external stainless steel products providing the appropriate grade of stainless is chosen and regular cleaning is undertaken.

How often?

For an area that receives regular rainfall that washes away the build-up of salt deposits, cleaning should be done once a year. If rainfall cannot get to certain areas, but still salt and pollution deposits can blow onto it.

Judge your cleaning regime by the nearby glass panels or window cleaning and clean the stainless as often as the glass nearby.

How do I do it?

For regular cleaning, and for a preventative regime, a simple wipe down by soft cloth or sponge with a mild detergent is enough (e.g. 5% diluted washing up liquid). Rinse off with deionised water. Rub dry with a clean dry cloth rather than letting the product drip dry.

If staining does not disappear, switch the soft cloth to a pad of Scotchbrite™ from 3M™. Use the soapy water with Scotchbrite™ vigorously on areas that are unpolished or not architecturally important. For polished areas of products with a grain (e.g. Satin finish 320 grit polish), rub gently forwards and backwards only in the direction of the grain direction so proceed with caution if this is an architecturally important feature. Again – rinse with de-ionised water and dry with a soft cloth. For heavier staining or contamination by iron products Kent recommend Avesta cleaning chemicals. Cleaner Avesta 401™ can be used instead of the mild detergent as above. Avesta 420™ Fingerprint remover is a good cleaner to for areas prone to public fingerprints – it must be sprayed on and rubbed in while wet.

Pickling Gel Avesta 130™ (hazardous) and Passivator Avesta 630™ can be used for large, important features, but these should be discussed, and a method statement is available from Kent Stainless for their use. This work can be subcontracted to Mister Stainless™ in Ireland and Edimex™ in Dubai.





Kent
STAINLESS

A partner you can rely on



Contact us:



Phone:	+353 53 914 3216	Email:	info@kentstainless.com
UK Freephone:	0800 376 8377	Address:	Ardcavan, Wexford
USA:	718 374 7391		Ireland, Y35 CRW2

